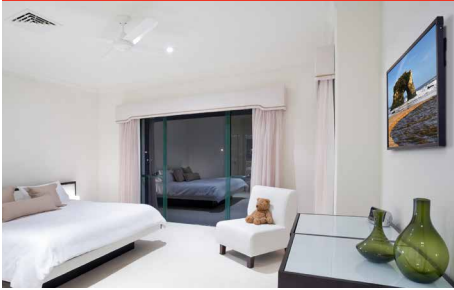


SUF641



**Mounting Pattern**  
75 to 425mm



**Max Load**  
150lb  
(68kg)

# DesignerSeries™ Universal Ultra Slim Flat Wall Mount

FOR 24" TO 50" ULTRA-THIN DISPLAYS\*

One of the world's slimmest mounts, at only 0.19" (5mm) thin, the SUF641 brings displays closer to the wall than most other products in the industry. This near-invisible mount is the beauty that supports the modern style of the latest ultra-thin displays, while the locking arm ensures a secure installation. This unmatched solution delivers space-saving, ultra-sleek looks and brings the display ultra-close to the wall.

- Mount compatible with ultra-thin displays with 75 to 425mm (in 25mm increments) horizontal mounting hole patterns
- Ultra slim design holds ultra-thin display only 0.19" (5mm) from the wall for a near-invisible application
- Theft resistant security screw on locking arm
- Easy three-step installation:
  1. Mount the wall plate
  2. Attach display adaptors to display
  3. Hang display
- Mounts to wood studs and concrete
- Comes with fastener pack with all necessary display attachment hardware



#### SECURE INSTALLATION

Locking arm holds display in place, preventing accidental bump-off or undesired horizontal adjustment



Holds display 0.19"  
(5mm) from the wall



Please visit [peerless-av.com/en-us/patents](http://peerless-av.com/en-us/patents) for patent information.

\*This display size range is simply a guideline for product selection. Displays larger than the screen size range may still be compatible as long as they fall within the VESA® pattern and max weight of the Peerless-AV® product.

†The depth of this mount (0.19" (5mm)) may not provide sufficient space for proper ventilation on some displays. Refer to the manufacturer's requirements for mounting the display before installation.

‡The display must have a flat mounting surface, or mounting holes need to be on the furthest back surface of the display. Input/output connection must be properly orientated to accommodate mounting 0.19" (5mm) from the wall.

**SUF641** DesignerSeries™ Universal Ultra Slim Flat Wall Mount for 24" to 50" Ultra-Thin Displays\*

**Product Specifications**

	DIMENSIONS (W x H x D)	PRODUCT WEIGHT	LOAD CAPACITY	FINISH	AVAILABLE COLORS
<b>SUF641</b>	20.00" x 5.50" x 0.19" (508 x 140 x 5mm)	2.67lb (1.2kg)	150lb (68kg)	Scratch Resistant Fused Epoxy	Gloss Black

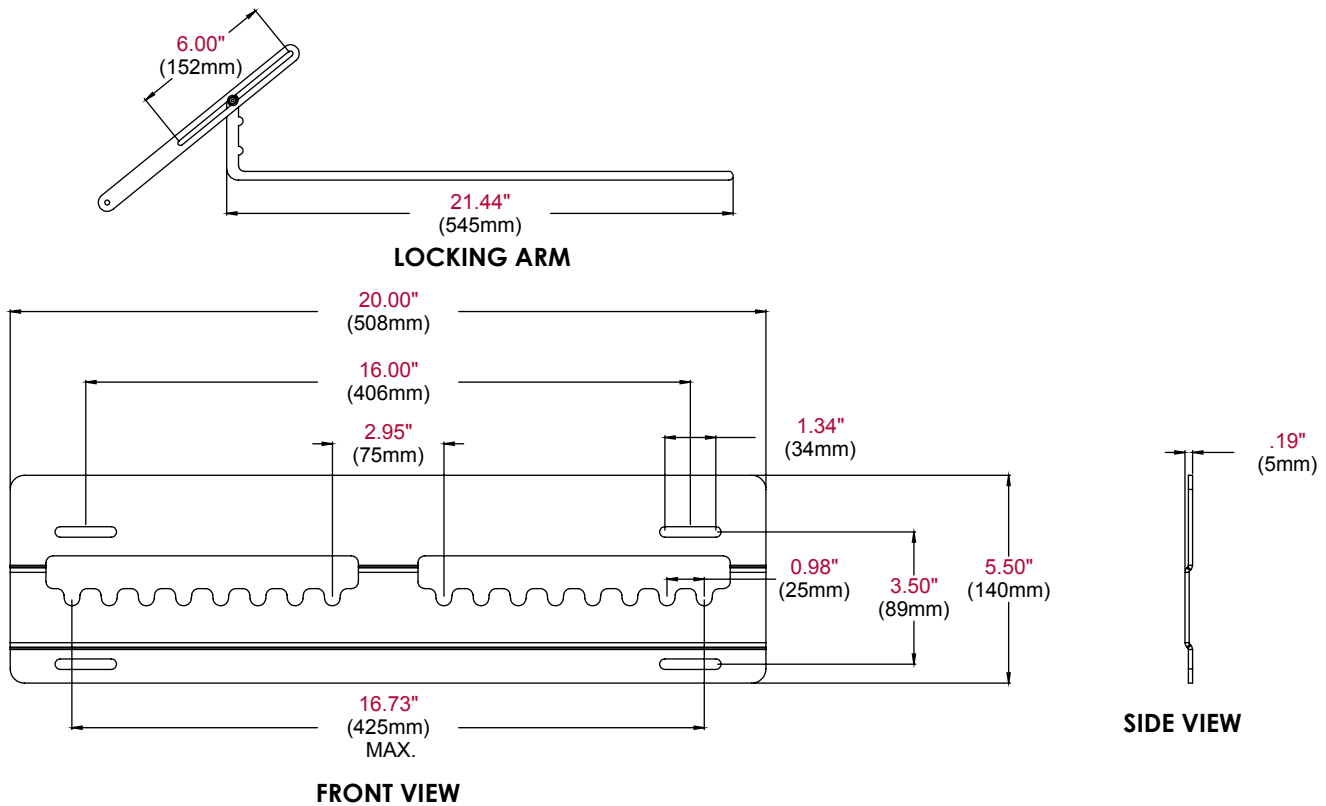
**Package Specifications**

	PACKAGE SIZE (W x H x D)	PACKAGE SHIP WEIGHT	PACKAGE UPC CODE	PACKAGE CONTENTS	UNITS IN PACKAGE
<b>SUF641</b>	6.00" x 1.375" x 24.50" (152.4 x 34.925 x 622.3mm)	4lb (1.8kg)	735029278368	Wall Mount, Locking Arm, Mounting and Display Attachment Hardware	1

**Accessories**

- ACC952:** Above Display SUF Security Lock Accessory
- ESHV models:** AV Wall Shelves
- IBA2(-W), IBA2AC(-W), IBA3(-W), IBA3AC(-W):** Recessed Cable Management and Power Storage Accessory Box
- IBA4-W:** Easy Mount Recessed Low Voltage Cable Plate
- IBA5-W:** Recessed Low Voltage Media Plate with Duplex Surge Suppressor

All dimensions = inch (mm)



**Architect Specifications**

The DesignerSeries™ Universal Ultra Slim Flat Wall Mount shall be a Peerless-AV model SUF641 and shall be located where indicated on the plans. Assembly and installation shall be done according to instructions provided by the manufacturer.

Visit [peerless-av.com](http://peerless-av.com) to see the complete line of AV solutions from Peerless-AV, including outdoor displays, wireless, kiosks, digital audio, display mounts, projector mounts, carts/stands, and a full assortment of accessories.

**Peerless-AV**  
2300 White Oak Circle  
Aurora, IL 60502 USA  
**(800) 865-2112**  
**(630) 375-5100**  
**Fax: (800) 359-6500**

**Peerless-AV EMEA**  
Unit 3 Watford Interchange  
Colonial Way, Watford  
Herts, WD24 4WP  
United Kingdom  
**+44 (0) 1923 200100**  
**Fax: +44 (0) 1923 200101**

**Peerless-AV Latin America**  
Ave de las Industrias 413  
Parque Industrial Escobedo  
Escobedo, N.L.,  
Mexico 66062  
**+52 (81) 8384-8300**  
**Fax: +52 (81) 8384-8360**

