

ACC185



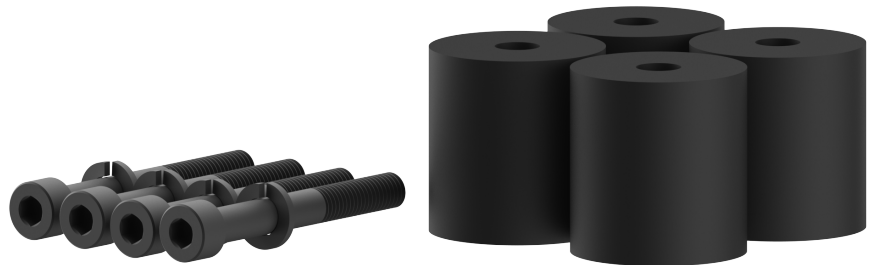
**Max Load**  
185lb  
(83.9kg)

# Screw and Spacer Kit

FOR 85" MICROSOFT® SURFACE™ HUB 2S/2X

The ACC185 Screw and Spacer Kit provide the appropriate spacing needed around the compute module to attach an 85" Microsoft® Surface™ Hub 2S/2X to a wall mount or mobile cart. The robust spacers ensure a solid connection that provide a wobble free touch application, and the custom screws are specified with the proper length for a proper installation.

- Includes (4) spacers, (4) screws and (4) lock washers
- Compatible with the following Peerless-AV® models: SF680, ST680, SR598



Please visit [peerless-av.com/en-us/patents](https://peerless-av.com/en-us/patents) for patent information.

✉ [info@peerless-av.com](mailto:info@peerless-av.com)

🌐 [peerless-av.com](https://peerless-av.com)

**peerless-AV**®  
Driving Technology Through Innovation

<b>ACC185</b>	Screw and Spacer Kit for 85" Microsoft® Surface™ Hub 2S/2X
---------------	--

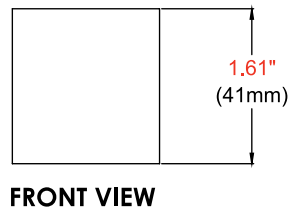
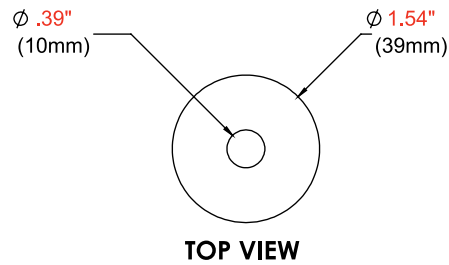
**Product Specifications**

	DIMENSIONS (W x H x D)	PRODUCT WEIGHT	LOAD CAPACITY	FINISH	AVAILABLE COLORS
<b>ACC185</b>	1.54" x 1.61" x 1.54" (39 x 41 x 39mm)	0.1lb (0.05kg)	185lb (83.9kg)	Nylon	Black

**Package Specifications**

	PACKAGE SIZE (W x H x D)	PACKAGE SHIP WEIGHT	PACKAGE UPC CODE	PACKAGE CONTENTS	UNITS IN PACKAGE
<b>ACC185</b>	3.00" x 3.25" x 7.75" (76 x 83 x 197mm)	1.0lb (0.5kg)	735029342700	(4) Spacers (4) Screws (4) Lock Washers	1

All dimensions = inch (mm)



**Architect Specifications**

The Screw and Spacer Kit for 85" Microsoft® Surface™ Hub 2S/2X shall be a Peerless-AV model ACC185 and shall be located where indicated on the plans. Assembly and installation shall be done according to instructions provided by the manufacturer.

Visit [peerless-av.com](http://peerless-av.com) to see the complete line of AV solutions from Peerless-AV, including outdoor displays, kiosks, display mounts, projector mounts, carts/stands, and a full assortment of accessories.

**Peerless-AV**  
2300 White Oak Circle  
Aurora, IL 60502 USA  
**(800) 865-2112**  
**(630) 375-5100**  
**Fax: (800) 359-6500**

**Peerless-AV EMEA**  
Unit 3 Watford Interchange  
Colonial Way, Watford  
Herts, WD24 4WP  
United Kingdom  
**+44 (0) 1923 200100**  
**Fax: +44 (0) 1923 200101**

**Peerless-AV Latin America**  
Av. de las Industrias 413  
Parque Industrial Escobedo  
General Escobedo, N.L.,  
México, 66062  
**+52 (81) 8384-8300**  
**Fax: +52 (81) 8384-8360**

