

FLD-UNV(-S)

Flat-Panel TV Base Stand Lock-Down Kit

For select TV base stands

The FLD-UNV lock-down kit provides a safe and simple solution for securing flat panel TV base stands in-place. Either one or both brackets can be used to secure a variety of TV manufacturer's base stands. The front square brackets attach to the desktop and serve as an anchor point for the screws attached to the brackets on the bottom of the base. After sliding into place the back brackets can be screwed to the top or side of the desktop surface.

FEATURES

- Brackets quickly fasten to the bottom of a variety of TV base stands
- Securely mounts to most surfaces with tamper-resistant hardware
- Low-profile clips remain hidden when installed
- Available in black or silver to match the TV or desktop surface



TV size: 22"-42"



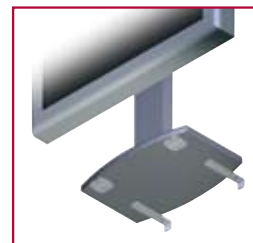
Max load: 100 lb (45.35 kg)



- **QUICK ATTACHMENT**
Fastens to bottom of TV base stand and desktop surface

- **SLIM, LOW PROFILE DESIGN**
Brackets hidden from view

- **TAMPER-RESISTANT HARDWARE**
Provides enhanced security



Example Installation Locations

Model Numbers

WARRANTY: Limited 5-year

FLD-UNV(-S)	For select TV base stands
-------------	---------------------------

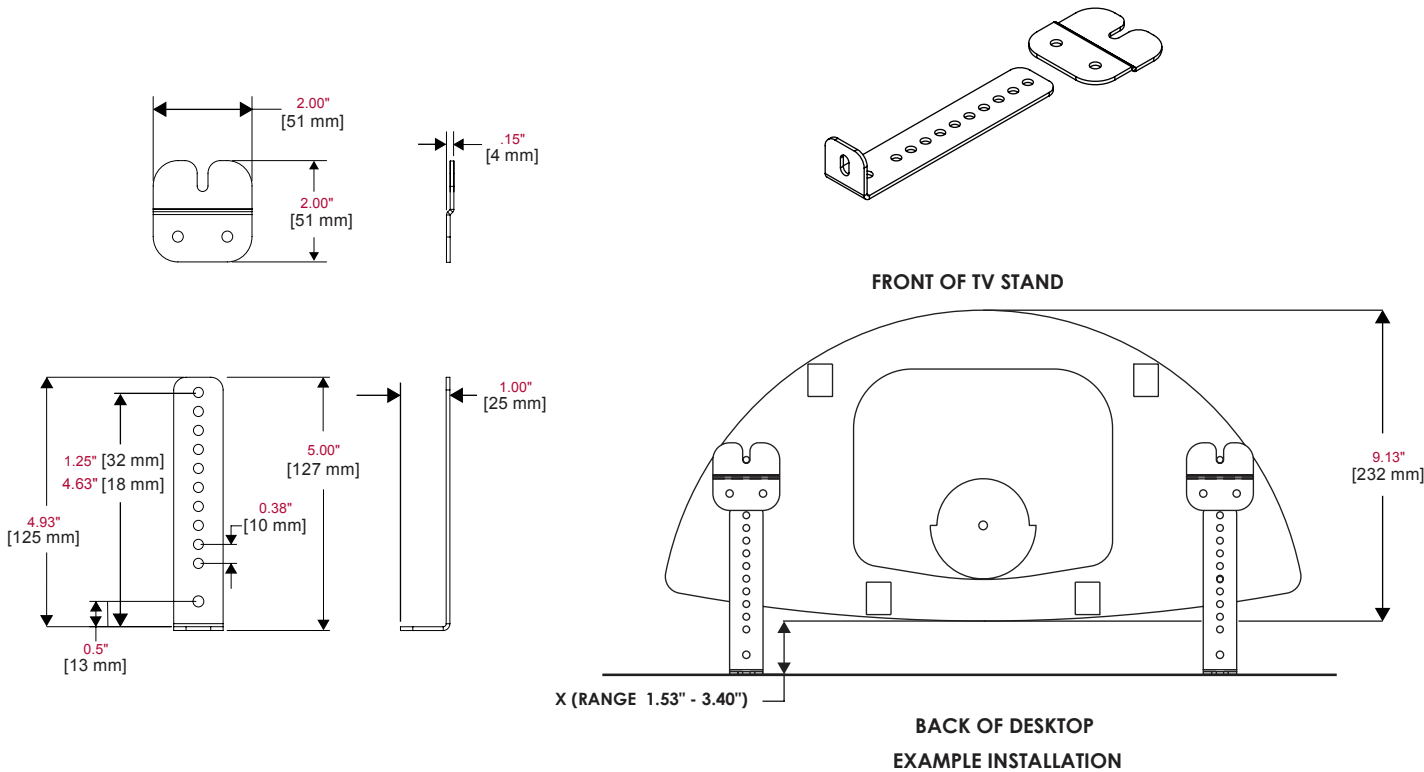
Product Specifications

	DIMENSIONS (W x H x D)	PRODUCT WEIGHT	LOAD CAPACITY	FINISH	AVAILABLE COLORS
FLD-UNV(-S)	2" x 1" x 5" (50.8 x 25.4 x 127 mm)	0.4 lb (.18 kg)	100 lb (45.35 kg)	Scratch resistant fused epoxy	FLD-UNV: Black FLD-UNV-S: Silver

Package Specifications

	PACKAGE SIZE (L x W x H)	PACKAGE SHIP WEIGHT	PACKAGE UPC CODE	PACKAGE CONTENTS	UNITS IN PACKAGE
FLD-UNV(-S)	5.625" x 3.25" x 2.25" (142.88 x 82.55 x 57.15 mm)	0.6 lb (.27 kg)	FLD-UNV: 735029238836 FLD-UNV-S: 735029238843	Front and back lock-down brackets, fastener packet	1

All dimensions = inch (mm)



ARCHITECTS SPECIFICATIONS

The Flat-Panel TV Base Stand Lock-Down Kit shall be a Peerless model FLD-UNV(-S) and shall be installed where indicated on the plans. It shall be constructed of heavy gauge cold rolled steel and finished with scratch resistant Black or Silver Fused Epoxy. Assembly and installation shall be done according to instructions provided by the manufacturer.