

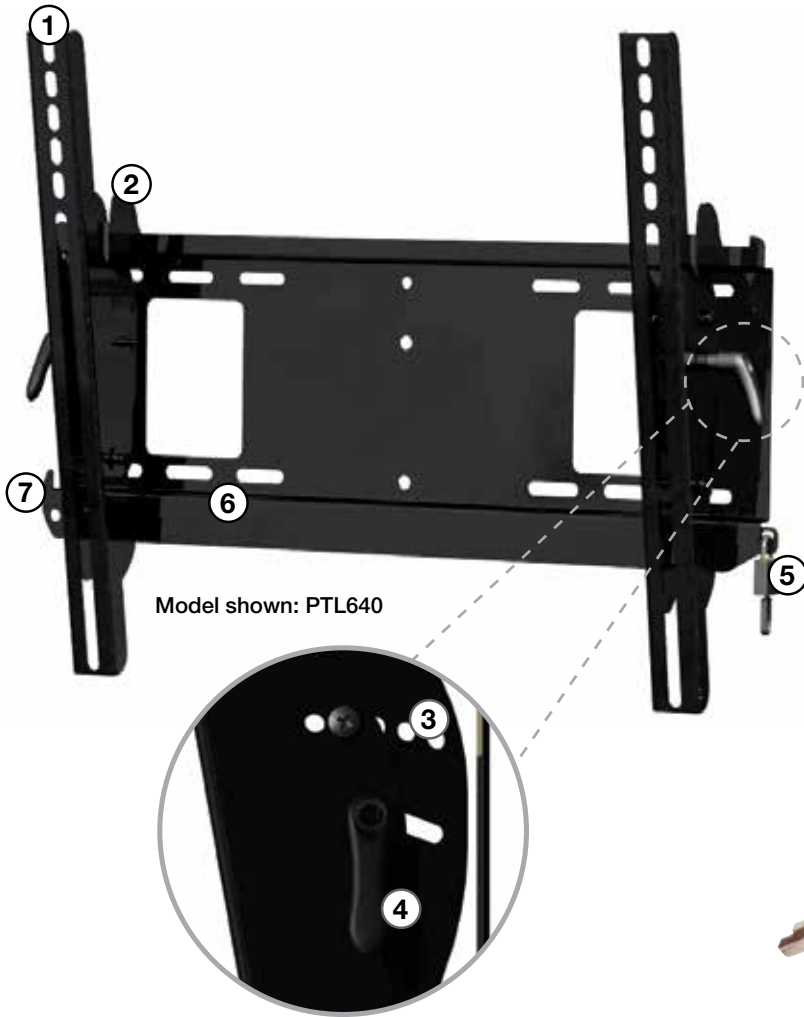
peerless-AV™

# Security Locking Wall Mounts















# Product Features & Benefits

Peerless' new Security Locking Mounts offer the next level of security within the wall mount range with a secure locking bar and provided pad lock. With 3 size ranges in flat to wall, tilting, and portrait mountable solutions, this line provides a high level of theft deterrence for 22" to 75" screens in public areas where security is of higher concern.



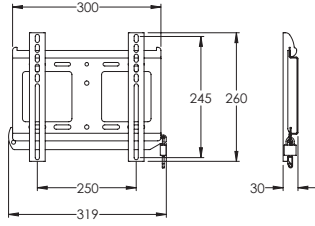
Model shown: PTL640

1. Wide screen compatibility with maximised mounting patterns; 635 and 640 models display screens in landscape and portrait orientations
2. Lateral adjustment to position screen at desired location
3. Unique Increlock™ sets screens at -5°, 0°, 5°, 10° or 15° tilt
4. Ratcheting knobs allow continuous +15°/-5° tilt adjustment
5. Provided security padlock adds visual theft deterrence
6. Easy to install locking bar installs from either side
7. Ramplock™ feature on lock bar reduces screen movement and vibration after engagement

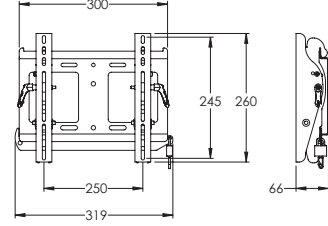
|   | LANDSCAPE   |   | PORTRAIT  |  |
|---|---|---|---|--|
|   | FLAT  | TILT  | FLAT  | TILT   |
| <b>SMALL</b><br>22" – 40" LCD<br>56kg/125lb<br>VESA 200X200             | PFL635<br> | PTL635<br> | PFL635<br>                | PTL635<br>                |
| <b>MEDIUM</b><br>32" – 60" LCD<br>68kg/150lb<br>VESA 400X400            | PFL640<br> | PTL640<br> | PFL640<br>                | PTL640<br>                |
| <b>LARGE</b><br>37" – 75" LCD<br>& PLASMA<br>79kg/175lb<br>VESA 700X400 | PFL650<br> | PTL650<br> | PFLP650<br><br>68kg/150lb | PTLP650<br><br>68kg/150lb |

# Product Specifications

**PFL635**

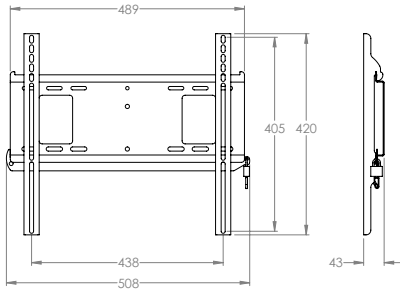


**PTL635**

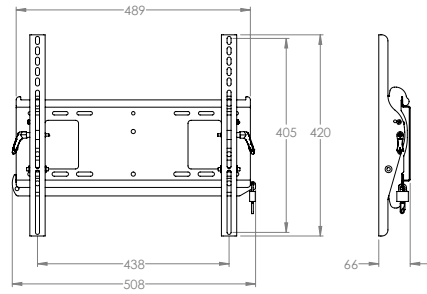


| Model  | UPC          | Screen Size | Max Load   | Max VESA |
|--------|--------------|-------------|------------|----------|
| PFL635 | 735029277460 | 22"-40" LCD | 56kg/125lb | 200x200  |
| PTL635 | 735029277491 | 22"-40" LCD | 56kg/125lb | 200x200  |

**PFL640**

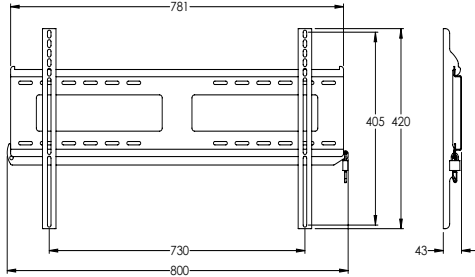


**PTL640**

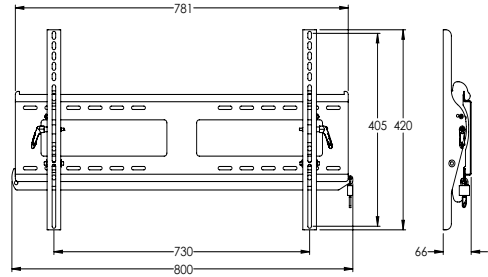


| Model  | UPC          | Screen Size | Max Load   | Max VESA  |
|--------|--------------|-------------|------------|-----------|
| PFL640 | 735029277477 | 32"-60" LCD | 68kg/150lb | 400x400mm |
| PTL640 | 735029277507 | 32"-60" LCD | 68kg/150lb | 400x400mm |

**PFL650**

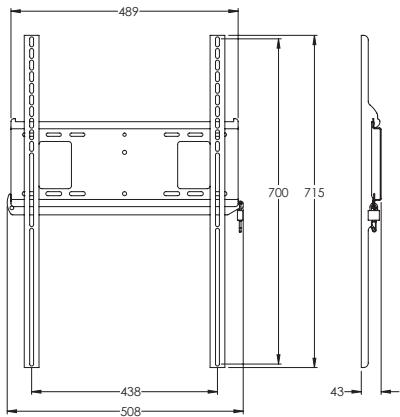


**PTL650**

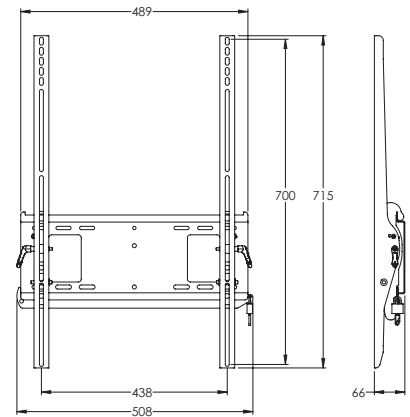


| Model  | UPC          | Screen Size          | Max Load   | Max VESA  |
|--------|--------------|----------------------|------------|-----------|
| PFL650 | 735029277484 | 37"-75" LCD & PLASMA | 79kg/175lb | 700x400mm |
| PTL650 | 735029277514 | 37"-75" LCD & PLASMA | 79kg/175lb | 700x400mm |

**PFLP650**



**PTLP650**



| Model   | UPC          | Screen Size          | Max Load   | Max VESA  |
|---------|--------------|----------------------|------------|-----------|
| PFLP650 | 735029277521 | 37"-75" LCD & PLASMA | 68kg/150lb | 700x400mm |
| PTLP650 | 735029277538 | 37"-75" LCD & PLASMA | 68kg/150lb | 700x400mm |

# Key Professional Markets

---

Peerless manufactures a comprehensive range of 'market specific' mounting solutions that are designed to meet the requirements and overcome the challenges faced in a wide variety of vertical markets. Contact Peerless-AV UK to request a dedicated catalogue on a specific market sector or visit [www.peerless-av.com](http://www.peerless-av.com) for more information.



**peerless-AV™**

Unit 3 Watford Interchange, Colonial Way,  
Watford, Herts. WD24 4WP, United Kingdom

T. 01923 200 100

F. 01923 200 101

E. [info@peerless-av.eu.com](mailto:info@peerless-av.eu.com)

w. [www.peerless-av.com](http://www.peerless-av.com)